



Automation & Robotics

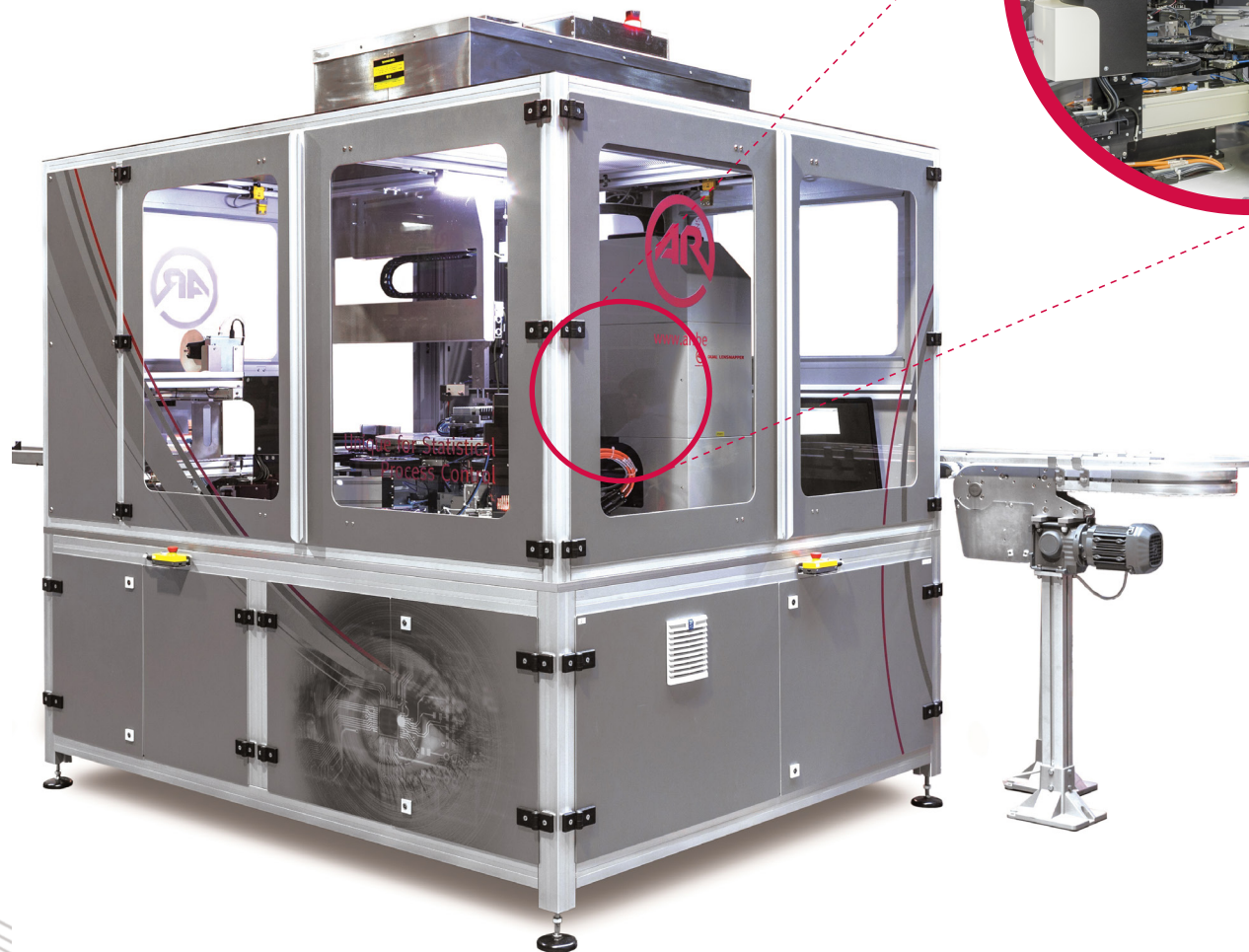
Control Unit for Prescription Lenses

The Control Unit for Prescription Lenses is a machine dedicated to prescription labs producing at least 1000 jobs per day.

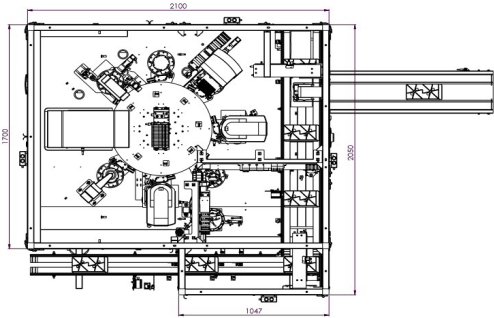
This multi-functional automatic machine is the only one on the market to combine the lens inspection according to the ISO/ANSI standards of all lens types, the mapping of freeform lenses, the flexible digital inking and the laser engraving.

The measurement data exported by the machine are very useful for an effective process control.

The Control Unit for Rx lenses is the perfect tool to increase your customer satisfaction, by improving your quality and optimizing the delivery times.



Main Features



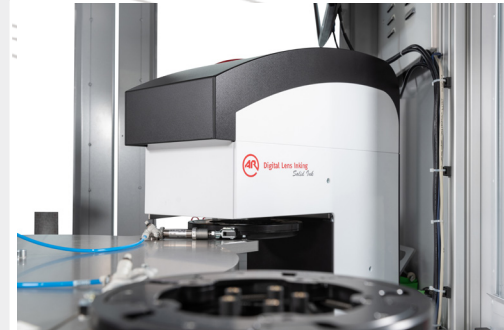
0. Vibrating platform (optimal centering of all lens types)
1. Turntable loading & unloading (5 fingers-grippers) & R/L handling (job tray reloading)
2. Fine positioning (PPOS) + diameter measurement + contour measurement + axis measurement of gradient-tinted lenses + axis alignment check for polarized lenses
3. Contactless thickness measurement
4. DUAL LENSMAPPER
5. Mobile FOCOVISION + 5th axis + additional prism
6. Free
7. Digital Inking station (option)
8. Gripper reset and Inking alignment check (option)
OR CO2 laser (option)
9. Conveyor belt - Ticket printer
10. Pusher for rejected lens connected to the machine structure

Technical Specifications



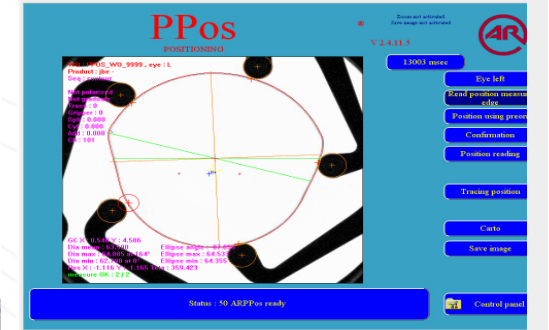
- Range**
- Diameter : 44 to 85 mm
 - Maximum power for positive axis : +14.00D
 - Minimum power for negative axis : -12.00D
 - Cylinder : 0 to + 5.00D
 - Prism : 10cm/m
 - Max. prism value at measurement point : 12 cm/m
 - Total lens height : < 20mm
 - Sag convex surface : < 17mm
- Accuracy**
- Diameter : 0.2 mm
 - Sphere and cylinder : 0.02D to 6.00D
0.03D to 14.00D
 - Prism : 0.02cm/m + 1%
 - Thickness without contact : 0.04 mm
- Capacity : 120 jobs/hour**

Benefits



- 100% production control
- Useful measurement data for an effective process control (immediate feedback on production)
- Contactless measurements (no damage to the lens)
- Automatic and accurate positioning (high success rate)
- High accuracy in measuring (power, decentration, thickness and diameter)*
- Mapping inspection (Go/NoGo decision + Global Mapping Criteria)
- Flexible Digital inking (Wax)
- Handling of any lens shape - even cut
- Left & right verification + handling (job tray reloading)
- High throughput
- Automatic calibration procedure
- OMA/VC-DCS compliant
- Production statistics available
- Remote connection (assistance, maintenance...)

Options



- Digital Inking (Wax)
- Inking alignment check
- Laser engraving (CO2)
- Dual Spectrometer (by transmission & reflection)
- Ionisation system
- Laminar flow box

The sale of all of Automation & Robotics products is subject to the company's applicable Warranty and Limitations of Warranty and to the company's Standard Terms and Conditions of Sale.

(* Required for ISO 9000 certification)

Parc industriel de Lambermont
Rue des Ormes 111
B-4800 Verviers - Belgium

Tél.: +32 (0)87 322 323
Fax: +32 (0)87 310 406

T.V.A.: BE 0423.637.107
R.P.M.: Verviers
www.ar.be

