



Automation & Robotics

# MASS PROD

MESF - V2

## PACKAGING UNIT FOR SEMI-FINISHED LENSES INTO BOXES



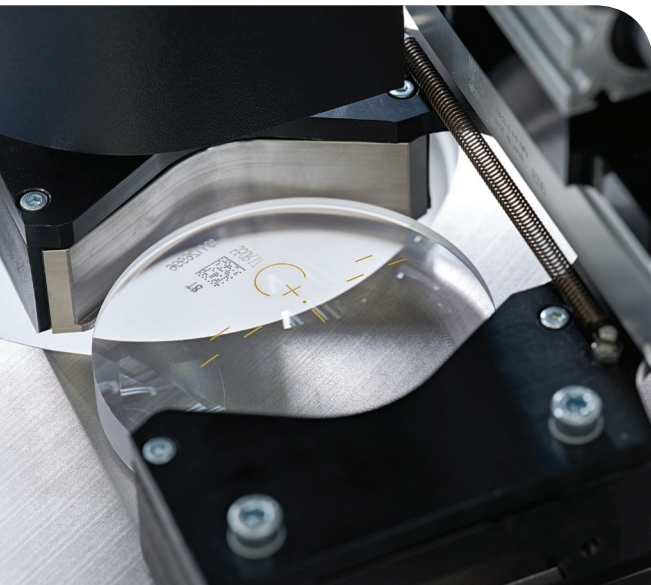
- No mispack
- High capacity
- Choice between 7 box types



Parc Industriel de Lambermont  
B-4800 VERVIERS - Belgium  
P. +32 (0)87 322 323



# PACKAGING UNIT FOR SEMI-FINISHED LENSES INTO BOXES



## CAPACITY

720 lenses/hour



## MAIN FEATURES

- › Selection of the box
- › Labelling (printing + application)
- › Box forming + insertion of the lens
- › Unique Lens ID (ULID) reading (optional station)



## BENEFITS

- › No mispack
- › Qualitative packaging
- › Choice among 7 box magazines  
(-> 7 box types)
- › Pre-sorting among 12 double storage magazines
- › Remote maintenance
- › 100% automatic packaging